

# **CAMINO**

*Technology for Transport*



**Trailers · Dumpers · Tankers · Special vehicles  
Environmental vehicles · Concrete mixers**

# Presentation



What is ***CAMINO*** ?

***CAMINO*** is a company founded in 1978. Our primary business line is the manufacture of heavy duty vehicles (trailers, semi-trailers, dumpers, environmental vehicles for the environmental sector, special vehicles and tankers). We are present on every economy sectors: civil engineering infrastructures, mining industry, energy industry, chemical industry, environmental sector, feeding, etc. It is one of the main Spanish manufactures of the heavy duty vehicles sector, being leaders in Andalucía.

# Presentation



## Where to find us

Our facility is placed in Seville, one of the main cities in Spain with direct connection with the primary Spanish ports.

Our company address is:

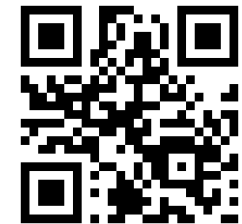
### **GRUPO CAMINO**

*Polígono Industrial Torre II , C/ Principal s/n  
41210 Torre de la Reina-Guillena (SEVILLA).*

*ESPAÑA/SPAIN*

Phone: 00 34 955 780 905

Fax: 00 34 955 780 906



*Download our address*

**CAMINO**  
*Technology for Transport*

# Presentation



How to contact us?

Sales Manager:

**Jesús Camino**

Mobile phone: 00 34 630 951 507

E-mail: [jcamino@frenoscamino.com](mailto:jcamino@frenoscamino.com)

Phone: 00 34 955 780 905

Fax: 00 34 955 780 906

**CAMINO**  
Technology for Transport



# Facilities

***CAMINO***  
*Technology for Transport*



# Facilities



Aerial view of the factory



Partial view of the office building

# Facilities



Storage area of raw materials (steel plates) and manufacture area of components of our own make.



Storage area for axles



Bended plates ready for assembly



# Facilities



Zone of manufacturing of tipper bodies.



Assembly of tipper bodies on chassis.



# Facilities



Storage of chassis.



Production zone for tankers and tanks.



Storage of subcomponents and accessories.



# Machinery

***CAMINO***  
*Technology for Transport*



# Machinery



8 meters bending machine.



Bended wear-resistant steel plate. 8.000x2.500 mm. thickness: 10 mm.  
hardness: 450 brinell.

# Machinery



4 meters bending machine



3 meters steel plate rolling machine



4 meters hydraulic guillotine shear.



# Machinery



Automatic (chassis main beam) welding machine



Plasma cutting machine

# Machinery



Metalworking: first section



Metalworking: second section



# Products

***CAMINO***  
*Technology for Transport*



# Products



**CAMINO**  
Technology for Transport



# Products

## 2-Axle curve-shaped tipper semitrailer



Available with different lengths, payload volume, materials and thicknesses.



2 kinds of suspension: mechanical or pneumatic.



Tipper body entirely manufactured with Hardox 450 plates. Thicknesses available: 4, 6, 8 or 10 mm.



# Products

## 2-Axle curve-shaped tipper semitrailer



Hydraulic tailgate



Conventional tailgate



# Products

## 2-Axle curve-shaped tipper semitrailer



Carrying rocks for breakwater.



Tipper semitrailer for 6x4 tractor

# Products

## 3-Axle curve-shaped tipper semitrailer



Available with different lengths, payload volume, materials and thicknesses.



2 kinds of suspension: mechanical or pneumatic.



Tipper body entirely manufactured with Hardox 450 plates. Thicknesses available: 4, 6, 8 or 10 mm.





# Products

## 3-Axle curve-shaped tipper semitrailer



# Products

## 3-Axle curve-shaped tipper semitrailer





# Products

## 3-Axle Curve-Shaped Tipper Semitrailer – Stainless Steel



Tipper body entirely made with stainless steel  
AISI 316 – L



Suitable for carrying corrosive substances,  
mineral, industrial waste (copper, zinc and slag).



Available with different payload volumes and  
lengths, from 18 to 28 m<sup>3</sup>.



# Products

## Square-shaped tipper semitrailer – 2-axle and 3-axle versions



Available on different lengths, payload volumes, materials and thicknesses.



2 kinds of suspension: mechanical or pneumatic.



Tipper body entirely manufactured with Hardox 450 plates. Thicknesses available: 4, 6, 8 or 10 mm.





# Products

Square-shaped tipper semitrailer – 2-axle and 3-axle versions



## Products

Square-shaped tipper semitrailer – 2-axle and 3-axle versions





# Products

## Tipper truck (dumper)



Manufacture of tipper bodies with different payload volumes from 10 to 18 m<sup>3</sup>. Suitable for 3-axle or 4-axle trucks of any brand.



We install our concrete mixer body on trucks of the following brands: RENAULT, MAN, MERCEDES, IVECO, DAF, VOLVO, SCANIA,...



Tipper body entirely manufactured with Hardox 450 plates. Thicknesses available: 6, 8 or 10 mm.



Each of our tippers equips front telescopic cylinder, scissors-type stabilizer and reinforced subframe with x-rods.



# Products

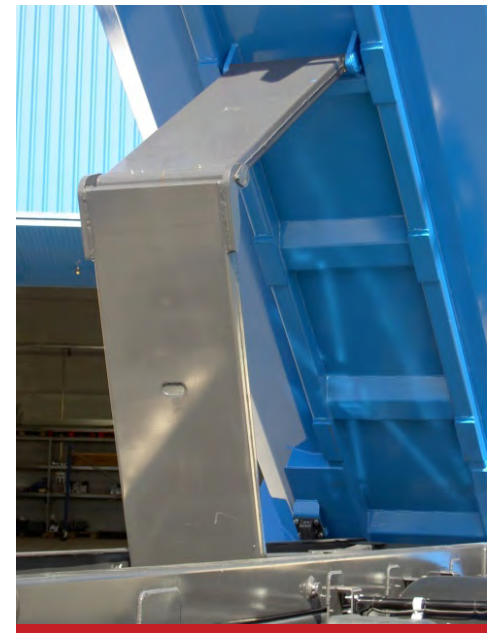
## Tipper truck (dumper)





# Products

Tipper truck (dumper)



# Products

## Tipper truck (dumper)





# Products

Tipper truck (dumper)



# Products

## Multi-lifting equipped trucks applications



12 m<sup>3</sup> TIPPER BODY



15.000 litres TANK



# Products

## Multi-lifting equipped trucks applications



14 m<sup>3</sup> TIPPER BODY



6 m<sup>3</sup> CONCRETE MIXER

# Products

## 2-Axle and 3-axle concrete mixer semitrailers



2-axle and 3-axle concrete mixer semitrailers available on different capacity and payload : 9, 10, 11 y 12 m<sup>3</sup>.



With different options and brands for reductions and engines.





# Products

## Concrete mixer semi-trailers details



## Concrete mixer trucks



Manufacture of concrete mixer bodies with different payload volumes from 7 to 10 m<sup>3</sup>. Suitable for 3-axle or 4-axle trucks of any brand.



We install our concrete mixer body on trucks of the following brands: RENAULT, MAN, MERCEDES, IVECO, DAF, VOLVO, SCANIA.....



With different option and brands for reductions and engines.





# Products

## Concrete mixer trucks



## Heavy equipment transport semitrailers



Manufacture of 2-axle, 3-axle or 4-axle heavy equipment transport semitrailers with twin wheel configuration and either pneumatic or mechanical suspension.



Available on different payload volumes with the following technically permissible maximum laden mass: 38, 45, 60 or 75 tons.



Installation of hydraulically powered capstan as an option.





# Products

## Heavy equipment transport semitrailers



4-axle semitrailer with 2 self-steering axles



Low-bed

# Products

## Heavy equipment transport semitrailers



15 T capstan



Rear ramp hydraulic detail



# Products

## Multi-lifting semitrailer

Multi-lifting semitrailer with special chassis design for transport of urban and industrial solid waste and mobile compactors and collectors for waste transfer plants at high density population centres.



# Products

## Scrap transport semitrailer



Scrap transport semitrailer available on 2-axle and 3-axle configurations, with either mechanical or pneumatic suspension.



Models with different lengths and payload volumes, from lengths of 9.000 mm to 12.000 mm and lateral heights from 1.400 mm to 1.800 mm.



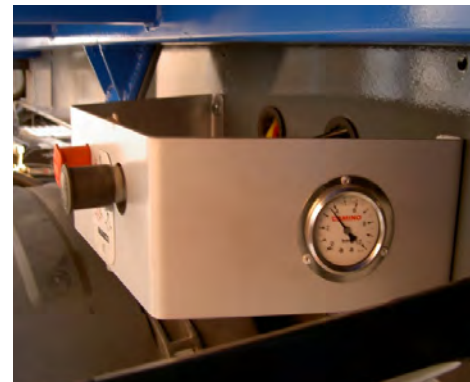
The tipper body is manufactured entirely with resistant-wear steel Hardox 450.





# Products

## Scrap transport semitrailer details



# Products

## Bilateral tilt flatbed semitrailer



Suitable for the transport of concrete reinforcements and steel plates with great width.



It is equipped with 3 central telescopic cylinders and tilt sequential valves.

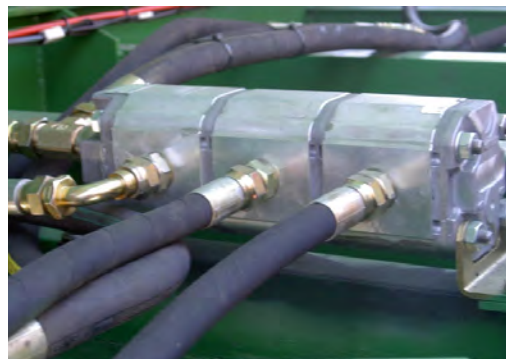


Five load securing points on each side and high elastic limit steel floor.



# Products

## Bilateral tilt flatbed semitrailer





# Products

## Dropside platform semitrailer



Available on different lengths with dropside made on aluminum, 2-axle or 3-axle configurations with either mechanical or pneumatic suspension.



Adapted to crane-equipped tractor units.



Platform semitrailers for the transport of maritime containers, specially suitable at port zones.



# Products

## Dropside platform semitrailer



Plane front-end of 1.800 mm height.



Oblique front-end for crane-equipped tractor.

# Products

## Tautliner semitrailer



Manufacture of PVC tarpaulin.



Sliding and lifting roof.



Folding rear wall and tarpaulin tensors at the front section.





# Products

## Tarpaulin body details



# Products

## Elliptical section tanker semitrailers



Manufacture of different volumes. The standard payload volumen varies from 27.000 to 30.000 litres.



Available on different configurations and stainless steel options (AISI-304 or AISI-316L) for food applications or corrosive chemical substances.



# Products

## Elliptical section tanker details





# Products

## Cylindrical section tanker semitrailer



Manufacture of different volumes. The standard payload volumen varies from 26.000 to 32.000 litres.



Available on different configurations and stainless steel options (AISI-304 or AISI-316L) for foodstuff applications or corrosive chemical substances.



It is possible to manufacture insulated tankers, lining the inner tank with extruded polyurethane or rockwool.



# Products

Cylindrical section tankers. other models



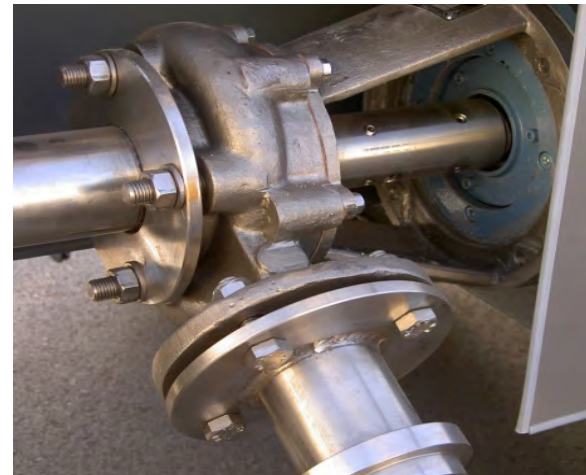
Chemical tanker



5-Axle road train

# Products

## Cylindrical section tankers details





# Products

## Unibody tanker semitrailers



Manufacture of different volumes.  
The standard payload volumen varies from 26.000 to 32.000 litres.



Available on different configurations and stainless steel options (AISI-304 or AISI-316L) for foodstuff applications or corrosive chemical substances.



Unibody tanker semitrailers has a lower unladen weight of than body-on-frame tanker ones.



# Products

## Unibody tanker details



# Products

## Unibody tanker details





# Products

## Pool-carrier semitrailers



Suitable for the transport of polyester or steel pools.



Extra low-bed design to achieve the highest load height.



1-axle with twin-wheel configuration.



# Products

## Container cargo trailers for port zones



Specially designed for inner transport of containers at port zones.



Great handling during loading and unloading operations.



Available capacities: 50 or 60 T.



# Products

## Specially designed vehicles for mines

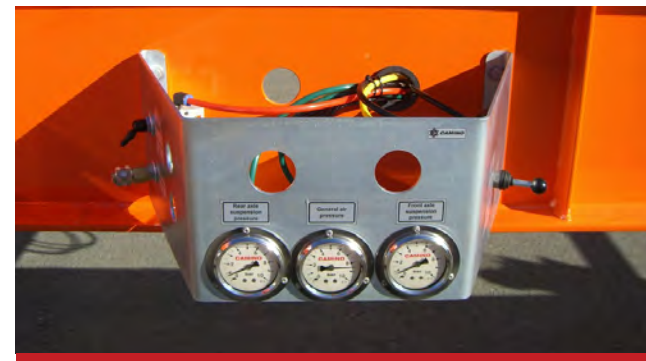
Tipper bodies specially designed for extreme hard works, offering to the customer the highest durability with the most demanding quality standards.





# Products

**CAMINO** manufactures trailers specially designed for the transport of solar power plant mirrors, being one of the leading companies that manufacture these vehicles.



# Products

HORMICAM 450 is an invention at the Grupo CAMINO that allows the transport of a special concrete used for dam building on a semidry state.



### Electromagnetic retarder axle for semitrailers



It can be installed on every kind of semitrailer, from 1 to three axle configuration.

Specially suitable for high slope roads, providing an uniform and secure braking.

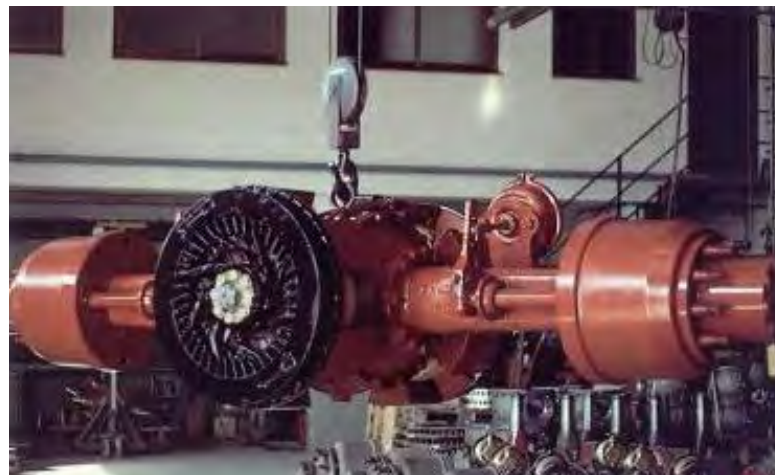


# Products

## Electromagnetic retarder axle for semitrailers



Right side Crown-pinion set.



Axle adapted for lowbed semitrailers.



Coil set detail.

# CAMINO

*Techn* **CAMINO** *port*

***Technology for Transport***

**GRUPO CAMINO**

Polígono Industrial Torre II , C/ Principal s/n  
41210 Torre de la Reina-Guillena (SEVILLA).

ESPAÑA/SPAIN

Phone: 00 34 955 780 905

Fax: 00 34 955 780 906